

Geocap

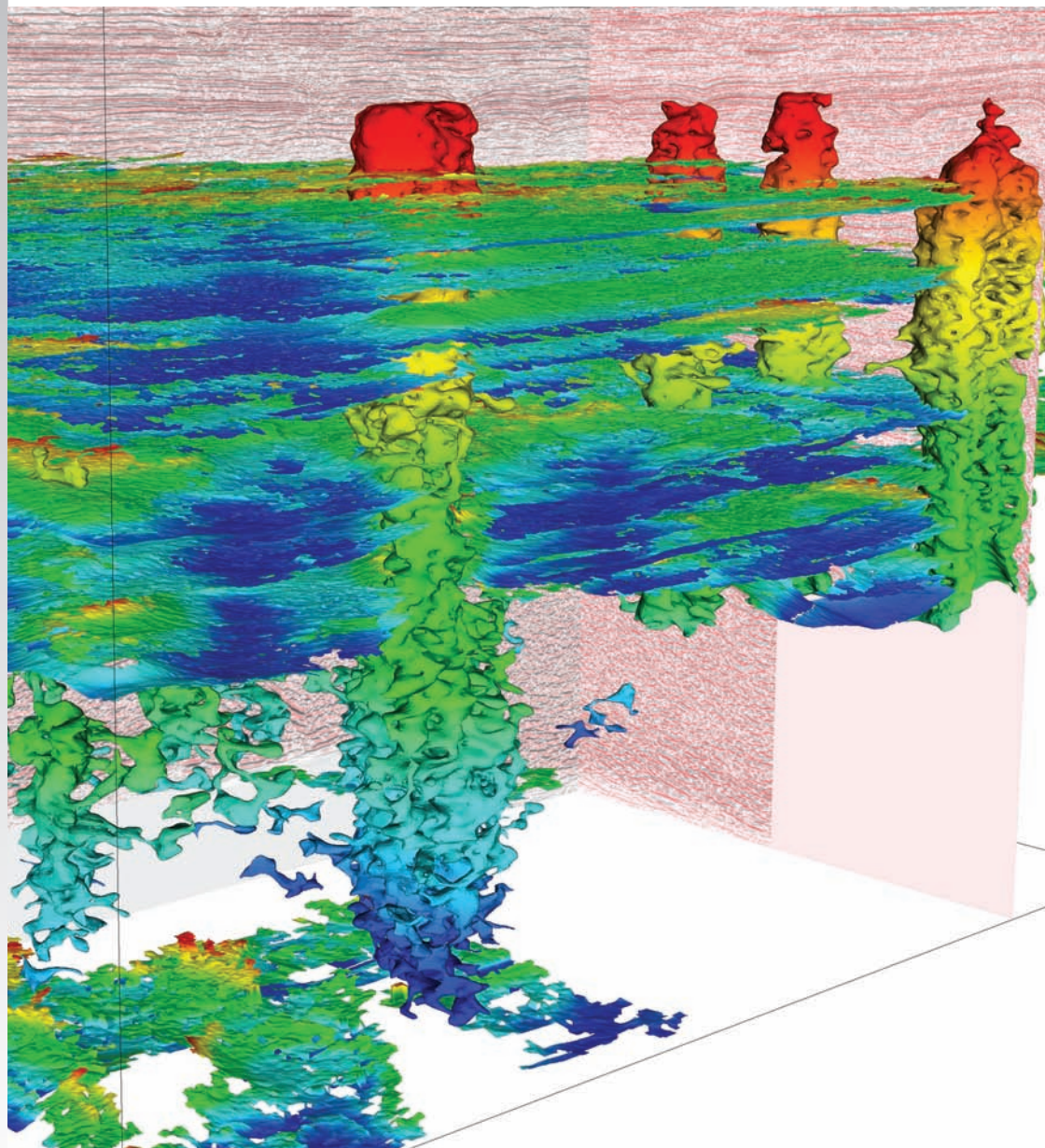


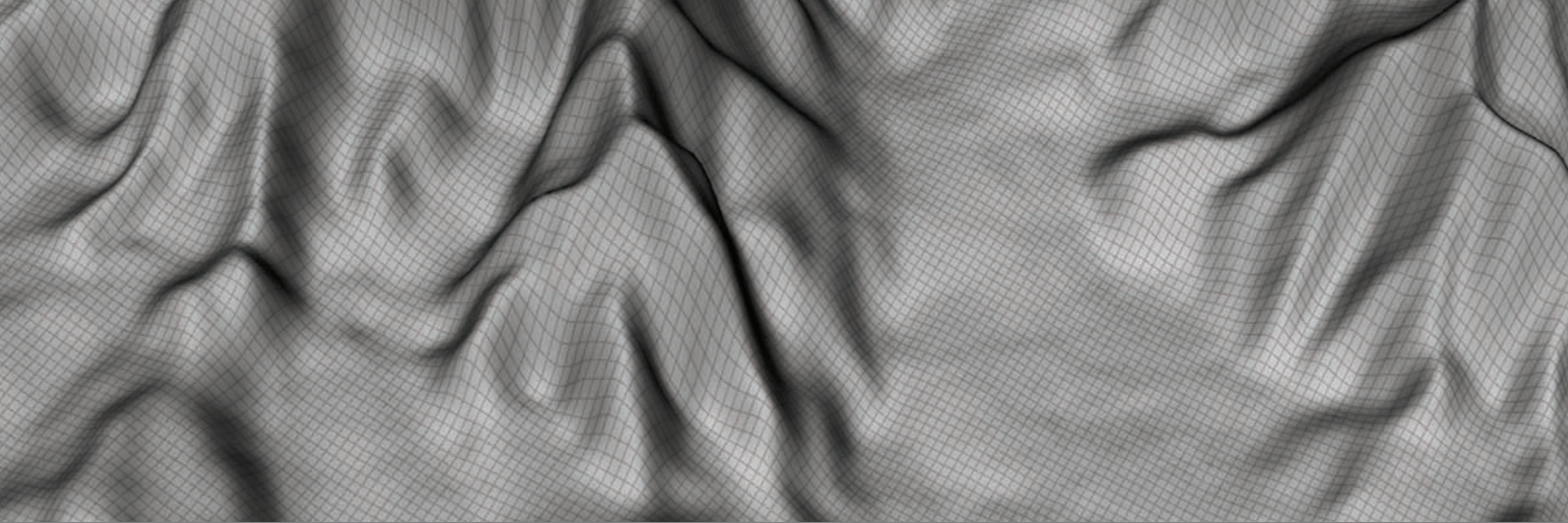
Features

- Automatic tracking of 2D- and 3D seismic
- Automatic generation of surfaces
- Attribute generation
- Tools for scanning through surfaces
- Surface interpretation tool
- 3D body generation

GIM

Surface-based interpretation is an innovative new method of seismic analysis that greatly reduces effort and increases the quality of the results while retaining full control of the process with the interpreter.





Geocap GIM

Import formats :

- ASCII
- SEG-Y 2D/3D
- VTK
- Shape
- GMT NetCDF
- DXF
- JPG
- Irap Binary Grid and ASCII Grid
- Databases incl ArcSDE and Oracle Spatial

Export:

- PDF3D
- Movie(*.avi)
- Shape
- ASCII column
- Irap ASCII and Binary
- VTK
- Arc/Info ASCII Grid
- GMT NetCDF
- GeoTiff
- Jpeg
- Dxf
- SEG-Y Surfaces
- 3D Geobodies
- ...and several others

System requirements:

Platform:

Windows 7, Windows Vista, Windows XP, Linux

RAM:

1GB minimum, 2GB recommended

Graphics:

512 MB



Automatic tracking

GIM automatically tracks all continuous reflectors along seismic lines or in a three-dimensional cube which can be exported as GIM 2D and 3D SEG-Y.

Auto generate surfaces

Thousands of surfaces can be generated in minutes with tracking data. GIM supports RMS and amplitude attributes, among several others.

Surface scanning

Scan quickly through surfaces or simply use movie mode for automatic display. This scanning method effectively reveals stratigraphic drainage opportunities, 4-way dip closures, and geometrical patterns of interest. Correlation between amplitude anomalies in the data and stratigraphic high areas are revealed at the click of a button. Surfaces are easily tagged and exported to the Geocap Project Manager or other interpretation systems.

Auto generate 3D bodies

Tracking data enables auto-generation of 3D bodies such as salt and gas chimneys.

Interpretation

Combine interpretation with full 3D surface mode interpretation. Extract and merge thousands of surfaces easily and efficiently. The 2D editor allows digitization and logical surface operations. It is an excellent tool for resolving conflicts and merging surface pieces.

Scanning tracked data

Scanning through tracked data provides a unique overview of the structural setting. In timeslice mode, geometrical patterns such as delineation of salt structures, gas chimneys, faults, and other data geometries can be simply extracted. Inverted tracking is also an option where the retained "noise" stands out as structures.

